



# Product Technical Specification

## FloodFence™



### Product Summary

**FloodFence™ is a lightweight and quick to deploy water diversionary system.**

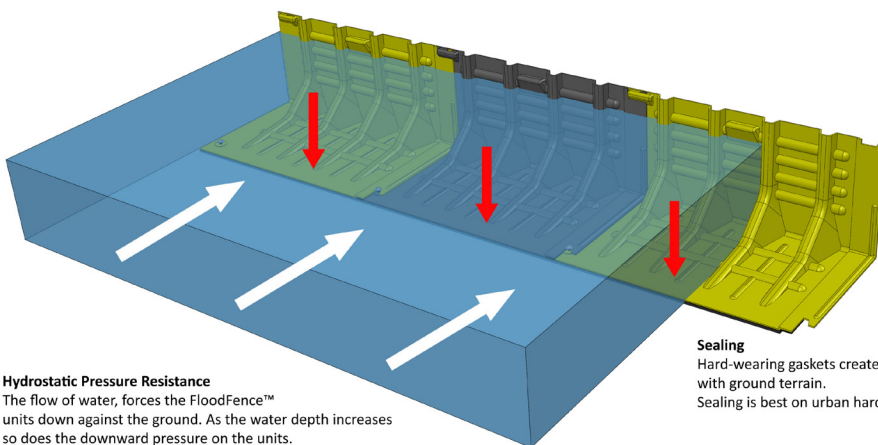
The system can be connected and deployed rapidly by one person. It doesn't require any ballast to be pre-applied. The system is self-balancing. The moving water flow applies a strong downward pressure onto the FloodFence units - this keeps them fixed in place, as well as applying pressure to the sealing gaskets.

### Specifications

- Dimensions of FloodFence unit:** 0.45m high x 1.0m x 0.58m.
- Connected length:** 0.91m
- Material:** ABS
- Weight of each FloodFence unit:** Approx 4kg
- Speed of Deployment:** Approx. 200-metres per hour
- Storage:** System stacks neatly. In storage can fit approx. 38-40 units to a pallet

### Parts

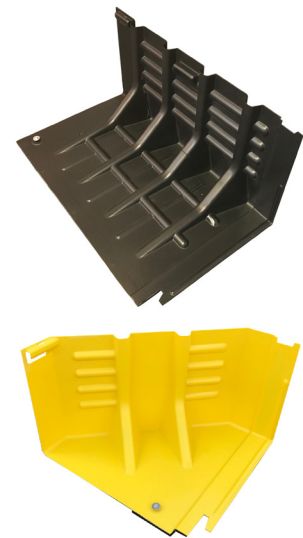
- 0424/FFS** Flood Fence
- 0424/FFC** Flood Fence Corner Unit
- 0424/FFWCR** Flood Fence Wall Connector (Right)
- 0424/FFWCL** Flood Fence Wall Connector (Left)
- 0424/FFLP** Jointing Pin Connection



**Hydrostatic Pressure Resistance**  
The flow of water, forces the FloodFence™ units down against the ground. As the water depth increases so does the downward pressure on the units. 'they stick to the ground'. The system is self-balancing.

**Sealing**  
Hard-wearing gaskets create a seal with ground terrain. Sealing is best on urban hard-standings.

**Robust**  
FloodFence units are ribbed maximising rigidity, strength and robustness when in use.



• email [sales@darcy.co.uk](mailto:sales@darcy.co.uk) • call 0800 0370 899



[darcy.co.uk](http://darcy.co.uk)



Working today for a cleaner tomorrow